



**Government of India
Ministry of Earth Sciences
India Meteorological Department**



Press Release

Date: 18th July, 2025

Time of Issue: 1330 hours IST

Subject: i) Under the influence of Depression over northwest Madhya Pradesh & adjoining Southwest Uttar Pradesh, heavy to very heavy rainfall likely to continue over Madhya Pradesh and Rajasthan during next 2 days with isolated extremely heavy falls over West Madhya Pradesh and Rajasthan on 18th July.

ii) Heavy to very heavy rainfall likely to continue over Kerala, Karnataka, Tamil Nadu during next 6-7 days with isolated extremely heavy falls over Kerala during 18th-20th and Coastal Karnataka on 18th July.

Realised weather during past 24 hours till 0830 hours IST of today, the 18th July, 2025:

- ❖ **Heavy to very heavy rainfall at some places with extremely heavy falls (≥ 21 cm)** has been recorded at isolated places over East Madhya Pradesh; **Heavy to very heavy rainfall at some places with extremely heavy falls (≥ 21 cm)** has been recorded at isolated places over East Uttar Pradesh.
 - ❖ **Heavy to very heavy rainfall (7-20 cm)** has been recorded at isolated places over Coastal Karnataka, Coastal Andhra Pradesh, Telangana, Sub-Himalayan West Bengal, Odisha, West Madhya Pradesh, East Rajasthan, West Uttar Pradesh; **Heavy rainfall (7-11 cm)** at isolated places over West Rajasthan, Mizoram, Assam, Arunachal Pradesh, Bihar, Goa, Madhya Maharashtra, Rayalaseema, Tamil Nadu, North Interior Karnataka and Chhattisgarh.
- For more details of realised weather, kindly refer [Annexure I](#).**

i. Weather Systems, Forecast and Warnings (refer to Annexure II & III):

- ❖ The **Monsoon trough** is active and runs near its normal position at mean sea level.
- ❖ Yesterday's Depression over Southeast Uttar Pradesh, close to Prayagraj moved slowly west-northwestwards and lay centred at 0830 hrs IST of today, the 18th July, 2025, over northwest Madhya Pradesh & adjoining Southwest Uttar Pradesh, 20 km southeast of Bhind, 50 km northeast of Gwalior. It is likely to move west-northwestwards across northwest Madhya Pradesh and east Rajasthan and weaken gradually into a well marked low pressure area during next 24 hours.
- ❖ Yesterday's Western **Disturbance** as a trough in middle tropospheric levels runs roughly along Long. 70°E to the north of Lat. 30°N has moved away east-northeastwards.
- ❖ A fresh **Western Disturbance** as a trough in middle tropospheric levels runs roughly along Long. 62°E to the north of Lat. 30°N. It is not likely to interact with the Depression over Southeast Uttar Pradesh over northwest India.
- ❖ An **upper air cyclonic circulation** lies over central parts of Pakistan in lower tropospheric levels.
- ❖ An **upper air cyclonic circulation** lies over northeast Assam in lower tropospheric levels.
- ❖ An **upper air cyclonic circulation** lies over south Coastal Andhra Pradesh & neighbourhood in lower & middle tropospheric levels tilting southwestwards with height.
- ❖ An **east-west trough** runs roughly along Lat. 13°N in middle tropospheric levels through the cyclonic circulation over south Coastal Andhra Pradesh.
- ❖ An **upper air cyclonic circulation** lies over Madhya Maharashtra in lower tropospheric levels.
- ❖ A **Low Pressure area** is likely to form over North Bay of Bengal around 24th July, 2025.

Under the influence of these systems, the following weather is likely:

Northwest India:

- ✓ **Extremely heavy rainfall (≥ 21 cm)** very likely at isolated places over Rajasthan on 18th and Uttarakhand on 20th & 21st July.
- ✓ Isolated **heavy rainfall** likely over Himachal Pradesh, Uttarakhand during 18th-24th; West Uttar Pradesh during 18th-22nd; East Uttar Pradesh on 21st; Jammu & Kashmir during 20th-23rd; Punjab, Haryana during 20th-22nd; Rajasthan during 18th-20th July with **very heavy rainfall over Rajasthan on 19th; Uttarakhand during 20th-22nd; West Uttar Pradesh on 18th & 21st and Himachal Pradesh during 21st-23rd July.**
- ✓ Light/moderate rainfall at most/many places accompanied with thunderstorm, lightning likely over western Himalayan region and some/many places over the plains during next 7 days.

South Peninsular India:

- ✓ **Extremely heavy rainfall (≥ 21 cm)** very likely at isolated places over Kerala during 18th-20th and Coastal Karnataka on 18th July.
- ✓ Isolated **heavy to very heavy rainfall** likely over Kerala & Mahe, Coastal and South Interior Karnataka during 18th-24th; Tamil Nadu during 18th-22nd July; Coastal Andhra Pradesh & Yanam on 18th & 19th July; isolated **heavy rainfall** over Coastal Andhra Pradesh & Yanam, north Interior Karnataka, Telangana during 18th-23rd; Lakshadweep on 19th & 20th; Rayalaseema during 18th-20th July.
- ✓ **Strong surface winds** (speed reaching 40-50 kmph) very likely over South Peninsular India during next 5 days.
- ✓ Light/moderate rainfall at many/some places over Kerala & Mahe, Lakshadweep, Karnataka, Rayalaseema; isolated to scattered rainfall over Coastal Andhra Pradesh & Yanam, Telangana during next 7 days.

East & Central India:

- ✓ **Extremely heavy rainfall (≥ 21 cm)** very likely at isolated places over West Madhya Pradesh on 18th July.
- ✓ Isolated **heavy rainfall** very likely to continue over Madhya Pradesh on 18th & 19th and during 21st-23rd; Odisha, Chhattisgarh during 19th -23rd; Vidarbha during 22nd-24th; Gangetic West Bengal, Jharkhand on 23rd & 24th; Bihar during 20th-22nd; Sub-Himalayan West Bengal & Sikkim during 18th-21st July **with very heavy rainfall over East Madhya Pradesh on 18th; Sub-Himalayan West Bengal & Sikkim on 19th & 20th and Odisha on 24th July.**
- ✓ Light/moderate rainfall at most/many places accompanied with thunderstorm & lightning likely over the region during next 7 days.

West India:

- ✓ **Heavy rainfall** likely at isolated places over Konkan & Goa, Ghat areas of Madhya Maharashtra during 18th-24th; Marathwada, north Gujarat on 18th July with **very heavy rainfall** over Konkan & Goa on 20th, 21st, 24th and Ghat areas of Madhya Maharashtra on 18th, 23rd & 24th July.
- ✓ Light/moderate rainfall at many/some places very likely over the region during next 5 days.

Northeast India:

- ✓ Light/moderate rainfall at many places accompanied with **thunderstorm, lightning** likely to continue over Northeast India during next 7 days.
- ✓ Isolated **heavy rainfall** very likely over Arunachal Pradesh, Assam & Meghalaya, Nagaland & Tripura during 18th-22nd with **very heavy rainfall** over Meghalaya on 19th July.

Winds associated with Depression over Southeast Uttar Pradesh

Wind Warnings: Squally wind speed reaching 40-50 kmph gusting to 60 kmph north Madhya Pradesh and adjoining west Uttar Pradesh & east Rajasthan and 30-40 kmph gusting to 50 kmph over adjoining areas of South Haryana is likely to prevail during next 12 hours and decrease gradually thereafter.

Fishermen Warnings:

Fishermen are advised to avoid venturing into the following from 18th July to 23rd July 2025 to the following Areas:

Arabian Sea: Along and off the Kerala, Karnataka coasts, over Lakshadweep, Maldives, Comorin areas; along and off the Somalia coast and adjoining sea areas, Oman and adjoining Yemen coast & adjoining sea areas; most parts of central Arabian Sea and adjoining south Arabian Sea during 18th to 23rd July; most parts of central Arabian Sea and adjoining south and north Arabian Sea for 18th to 20th July.

Bay of Bengal:

Most parts of south Bay of Bengal, Gulf of Manna; Andaman Sea during 18th & 23rd July; most parts of south Bay of Bengal and adjoining central Bay of Bengal during 20th to 23rd July, most parts of south & central Bay of Bengal, off Tamil Nadu and Andhra Pradesh coasts during 21st to 23rd July.

Total suspension of fishing operations is suggested over above mentioned areas and dates.

ii. Weather conditions and forecast over Delhi/NCR during 18th to 21st July, 2025 (Annexure IV)

For more details, kindly refer National Weather Bulletin:

https://mausam.imd.gov.in/responsive/all_india_forecast_bulletin.php

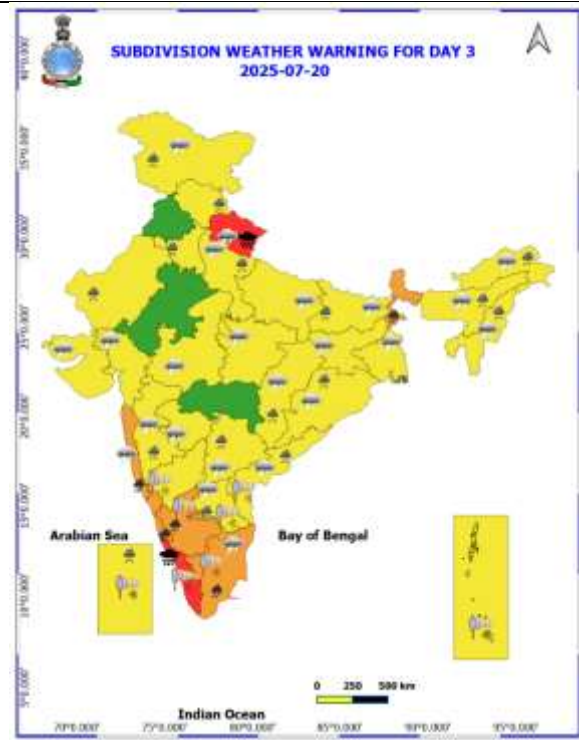
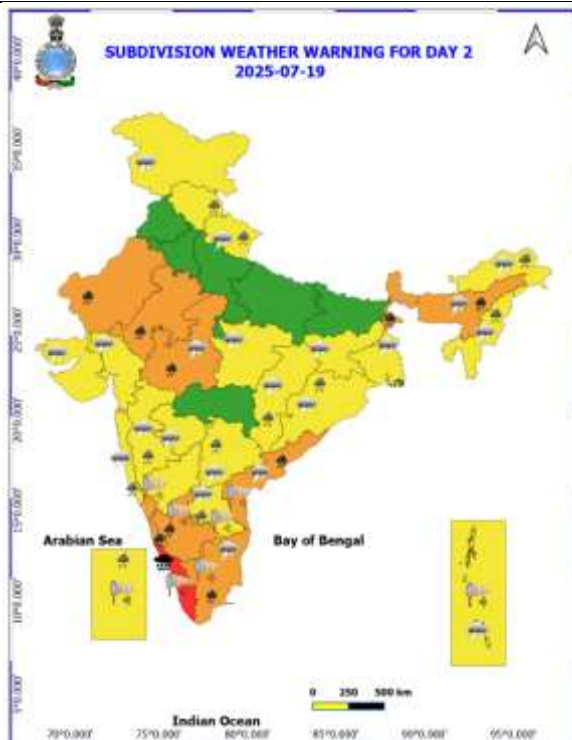
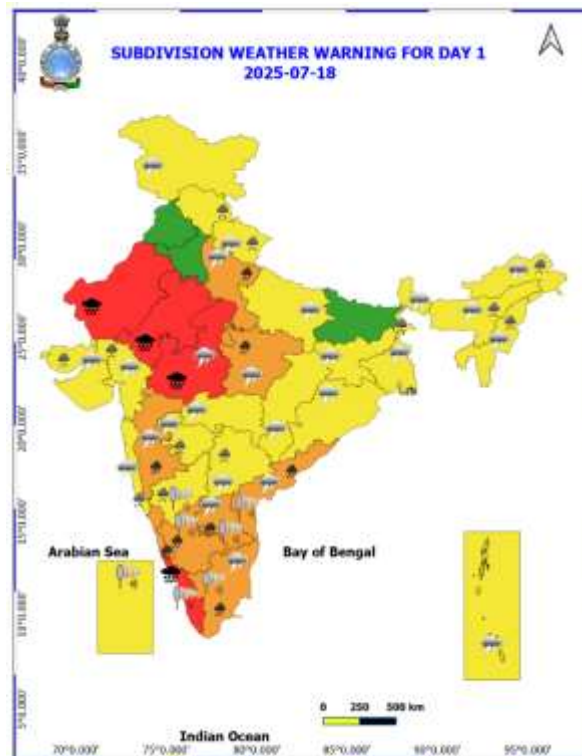
For District wise warnings refer: <https://mausam.imd.gov.in/responsive/districtWiseWarningGIS.php>

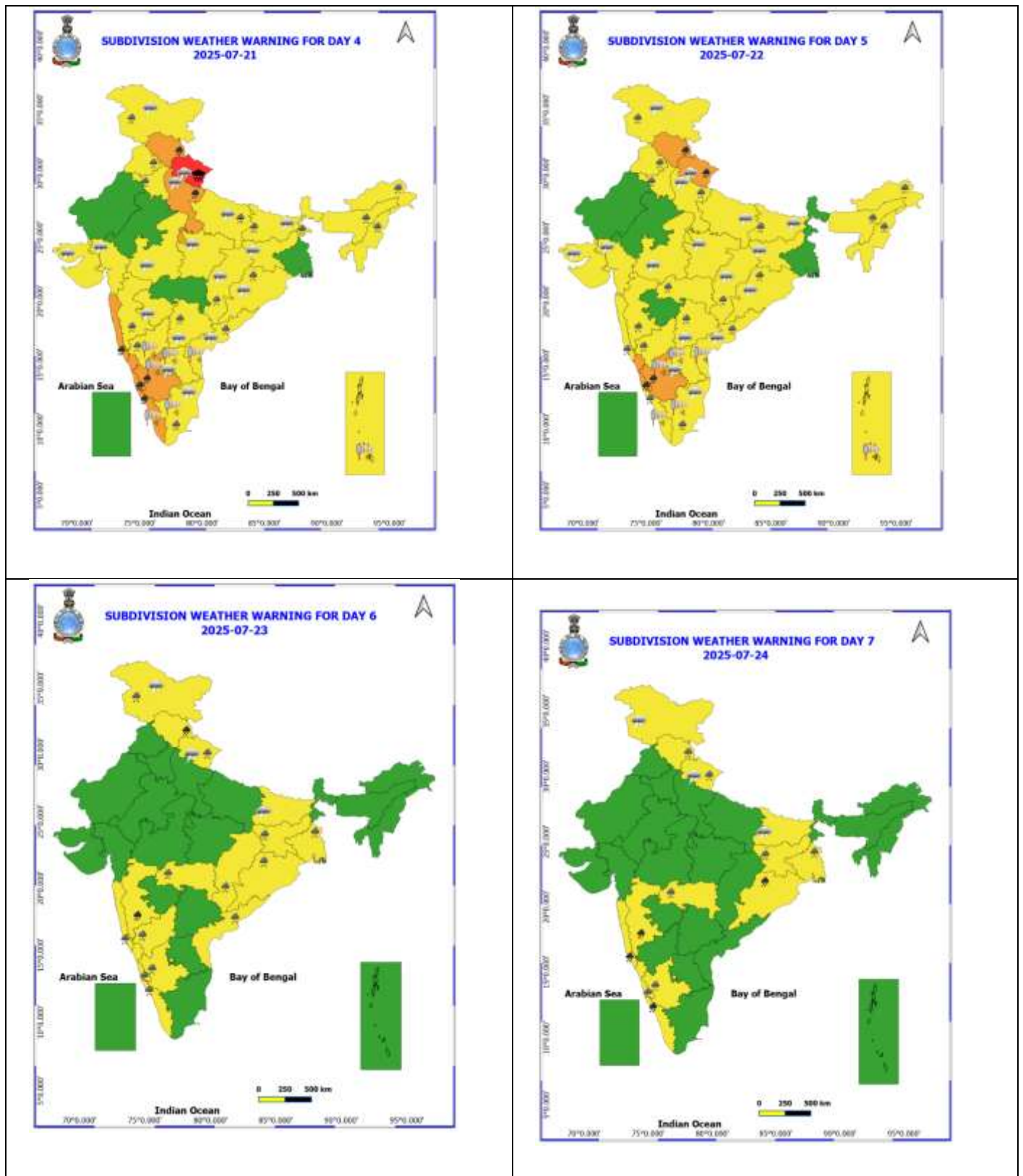
Rainfall recorded (in cm) during past 24 hours till 0830 hours IST of today, the 18th July:

- ❖ **East Madhya Pradesh:** Chahtarpur-aws (dist Chhatarpur) 31; Gaurihar (dist Chhatarpur) 27; Palera (dist Tikamgarh) 23; Lavkushnagar (dist Chhatarpur) 19; Rajnagar (dist Chhatarpur) 18; Ajaigarh (dist Panna) 17; Khajuraho AP (dist Chhatarpur) 15; Satna (raghurajnagar) (dist Satna), Sohawal (dist Satna), Birsingpur (dist Satna) 14 Each; Nowgong (dist Chhatarpur), Amarpatan (dist Satna), Jatara (dist Tikamgarh), Badamalhera (dist Chhatarpur), Mohangarh (dist Tikamgarh) 13 Each; Sirmaur (dist Rewa) 12; Panna-aws (dist Panna), Nagode (dist Satna), Majhgaon (dist Satna), Khargapur (dist Tikamgarh) 11 Each; Devendranagar (dist Panna), Naigarhi (dist Rewa) 10 Each; Tikamgarh-aws (dist Tikamgarh), Rampur Baghelan (dist Satna), Gonour (dist Panna), Raipurkarchuliyan (dist Rewa), Mangawan (dist Rewa), Amanganj (dist Panna), Bijawar (dist Chhatarpur) 9 Each; Hanumana (dist Rewa), Pawai (dist Panna), Baldevgarh (dist Tikamgarh), Teonthar (dist Rewa), Semariya (dist Rewa), Bilhari (dist Katni), Badagaon Dhasan (dist Tikamgarh) 7 Each;
- ❖ **West Madhya Pradesh:** Bhanpura (dist Mandsaur) 18; Datia-aws (dist Datia) 13; Indergarh (dist Datia) 12; Bhandar (dist Datia) 10; Seodha(seondha) (dist Datia), Mau (dist Bhind) 8 Each; Guna-aws (dist Guna), Khilchipur (dist Rajgarh) 7 Each;
- ❖ **East Rajasthan:** Sangod (dist Kota) 17; Mangrol (dist Baran), Atru SR (dist Baran), Mandana SR (dist Kota), Ajmer (dist Ajmer), Nasirabad (dist Ajmer) 8 Each; Ajmer Tehsil SR (dist Ajmer) 7;
- ❖ **Coastal Karnataka:** Manki (dist Uttara Kannada) 16; Honavar (dist Uttara Kannada), Shirali PTO (dist Uttara Kannada), Gersoppa (dist Uttara Kannada) 9 Each; Kadra (dist Uttara Kannada) 8; Castle Rock (dist Uttara Kannada), Kumta (dist Uttara Kannada) 7 Each;
- ❖ **West Uttar Pradesh:** Kulpahar (Mahoba)-17
- ❖ **Sub Himalayan West Bengal & Sikkim:** Buxaduar (dist Alipurduar) 13; Karballa Tea Estate (dist Jalpaiguri), Leesh River Tea Garden (dist Jalpaiguri), Moraghat Tea Estate (dist Jalpaiguri) 11 Each; Beech Tea Garden (dist Alipurduar) 10; Chengmari/Diana (dist Jalpaiguri), Gandrapara Tea Garden (dist Jalpaiguri), Jiti T.e. (dist Jalpaiguri), Zurrantee T.e (dist Jalpaiguri) 9 Each; Banarhat High School (dist Jalpaiguri), Palashbari Tea Estate (dist Jalpaiguri), Fagu Tea Estate (dist Jalpaiguri) 8 Each; Ghish (dist Jalpaiguri), Jaybirpara Tea Estate (dist Alipurduar) 7 Each;
- ❖ **Telangana:** Bala Nagar (dist Mahabubnagar) 12; Shadnagar (dist Rangareddy) 11; Shadnagar(ARG) (dist Rangareddy) 10; Kollapur (dist Nagarkurnool) 9; Marriguda (dist Nalgonda), Mattampally (dist Suryapet) 7 Each;
- ❖ **Coastal Andhra Pradesh & Yanam:** Yerragondapalem (dist Prakasam) 12; Guntur (dist Guntur) 9;
- ❖ **Odisha:** Kotraguda (dist Rayagada) 12; Padia (dist Malkangiri) 10; Phulbani (dist Kandhamal), Rajgangpur (dist Sundargarh) 7 Each;
- ❖ **West Rajasthan:** Pilibanga SR (dist Hanumangarh) 11; Bhadra (dist Hanumangarh) 7;
- ❖ **Madhya Maharashtra:** Gaganbawada (dist Kolhapur) 11;
- ❖ **Tamil Nadu, Puducherry & Karaikal:** Maduranthagam (dist Chengalpattu) 9; Tiruttani (dist Tiruvallur), Gingee (dist Villupuram) 7 Each;
- ❖ **Rayalaseema:** Badvel (dist Ysr District) 9; Srisailam (dist Nandyal) 8; Pakala (dist Tirupati) 7;
- ❖ **Bihar:** Sheikhpura (dist Sheikhpura), Fatuha (dist Patna) 9 Each; Barbiga (dist Sheikhpura) 8;
- ❖ **Arunachal Pradesh:** Deomali AWS (dist Tirap) 9;
- ❖ **Chhattisgarh:** Sukma (dist Sukma) 8;
- ❖ **Kerala & Mahe:** Kudulu (dist Kasargod) 7;
- ❖ **North Interior Karnataka:** Kakkeri (dist Yadgir) 7;
- ❖ **Konkan & Goa:** Quepem (dist South Goa) 7.

Table-1								
7 Days Rainfall Forecast								
S.No.	Subdivision	18- Jul	19- Jul	20- Jul	21- Jul	22- Jul	23- Jul	24- Jul
		Day 1	Day 2	Day 3	Day 4	Day 5	Day 6	Day 7
1	ANDAMAN & NICOBAR ISLANDS	FWS	WS	WS	WS	WS	FWS	FWS
2	ARUNACHAL PRADESH	FWS	FWS	FWS	FWS	FWS	SCT	SCT
3	ASSAM & MEHGHALAYA	SCT	FWS	FWS	FWS	FWS	SCT	SCT
4	NAGALAND, MANIPUR, MIZORAM AND TRIPURA	FWS	FWS	FWS	FWS	FWS	SCT	SCT
5	SUB HIMALAYAN WEST BENGAL & SIKKIM	FWS	FWS	WS	WS	WS	WS	WS
6	GANGETIC WEST BENGAL	SCT	FWS	FWS	SCT	SCT	FWS	FWS
7	ODISHA	SCT	FWS	FWS	FWS	FWS	FWS	FWS
8	JHARKHAND	SCT	SCT	SCT	SCT	FWS	FWS	FWS
9	BIHAR	ISOL	ISOL	SCT	SCT	SCT	SCT	SCT
10	EAST UTTAR PRADESH	SCT	ISOL	SCT	SCT	SCT	SCT	SCT
11	WEST UTTAR PRADESH	FWS	SCT	FWS	FWS	SCT	SCT	SCT
12	UTTARAKHAND	FWS	FWS	WS	WS	WS	WS	WS
13	HARYANA, CHANDIGARH & DELHI	SCT	SCT	ISOL	FWS	FWS	SCT	SCT
14	PUNJAB	SCT	ISOL	ISOL	FWS	FWS	ISOL	ISOL
15	HIMACHAL PRADESH	WS	FWS	FWS	WS	WS	WS	WS
16	JAMMU AND KASHMIR AND LADAKH	FWS	FWS	FWS	WS	WS	WS	WS
17	WEST RAJASTHAN	FWS	ISOL	ISOL	ISOL	ISOL	ISOL	ISOL
18	EAST RAJASTHAN	WS	FWS	SCT	SCT	ISOL	ISOL	ISOL
19	WEST MADHYA PRADESH	WS	FWS	SCT	SCT	FWS	FWS	FWS
20	EAST MADHYA PRADESH	WS	FWS	FWS	FWS	FWS	FWS	FWS
21	GUJRAT REGION	SCT	SCT	SCT	ISOL	SCT	SCT	SCT
22	SAURASHTRA & KUTCH	SCT	SCT	SCT	ISOL	ISOL	ISOL	ISOL
23	KONKAN & GOA	FWS	FWS	WS	WS	WS	WS	WS
24	MADHYA MAHARASHTRA	SCT	SCT	SCT	SCT	SCT	SCT	SCT
25	MARATHWADA	ISOL	ISOL	ISOL	ISOL	ISOL	ISOL	ISOL
26	VIDARBHA	FWS	SCT	SCT	FWS	FWS	FWS	FWS
27	CHHATTISGARH	SCT	SCT	SCT	FWS	FWS	FWS	FWS
28	COASTAL ANDHRA PRADESH	SCT	FWS	FWS	FWS	SCT	SCT	SCT
29	TELANGANA	FWS	FWS	SCT	SCT	SCT	SCT	SCT
30	RAYALASEEMA	SCT	FWS	FWS	FWS	SCT	SCT	SCT
31	TAMILNADU & PUDUCHERRY	SCT	SCT	SCT	SCT	SCT	SCT	SCT
32	COSTAL KARNATAKA	WS	WS	WS	WS	WS	WS	WS
33	NORTH INTERIOR KARNATAKA	WS	WS	FWS	FWS	FWS	FWS	FWS
34	SOUTH INTERIOR KARNATAKA	WS	WS	WS	WS	WS	WS	WS
35	KERALA AND MAHE	WS	WS	WS	WS	WS	WS	WS
36	LAKSHADWEEP	WS	WS	WS	WS	WS	WS	WS

- As the lead period increases forecast accuracy decrease.





- Action may be taken based on ORANGE AND REDCOLOUR warnings.
- Vulnerable regions likely urban and hilly areas action may be initiated for heavy rainfall warning.
- As the lead period increases forecast accuracy decreases.

Detailed districtwise Multi Hazard weather warning for next five days available at <https://mausam.imd.gov.in/responsive/districtWiseWarningGIS.php>

Weather forecast over Delhi/NCR during 18th to 21th July 2025**Past Weather:**

There has been fall in the minimum temperature up to 1°C and no significance changes in maximum temperature over Delhi/NCR during the past 24 hours. The maximum and minimum temperatures over Delhi were around 33 to 34°C and 23 to 24°C respectively. The minimum temperature was below normal up to 2 to 3°C and the maximum temperature was below normal up to 1 to 2°C. Generally cloudy sky conditions with predominant surface wind from the southeast/northeast direction with wind speeds up to 18 kmph prevailed during the past 24 hours. Very light to light rainfall has been recorded in most places with isolated places of moderate rainfall over Delhi. Generally cloudy sky conditions with a windspeed of less than 20 kmph from the northeast direction prevailed over the region in the forenoon today.

Weather Forecast:

18.07.2025: Generally cloudy sky. Very light to light rain accompanied with thunderstorms/lightning. Occasionally strong surface winds 25- 35 kmph gusting to 45 kmph during thunderstorm. The maximum temperatures over Delhi are likely to be in the range of 34 to 36°C. The maximum temperature will be near normal. The predominant surface wind will likely be from the east direction with a wind speed of less than 25 kmph in the afternoon. The wind speed will gradually decrease becoming 15-20 kmph from the southeast direction during evening and night.

19.07.2025: Partly cloudy sky. Very light to light rain. The maximum and minimum temperatures over Delhi are likely to be in the range of 34 to 36°C and 23 to 25°C respectively. The minimum temperature will be below normal up to 2 to 3°C, and the maximum temperature will be near normal. The predominant surface wind will likely be from the southeast direction with a wind speed of less than 20 kmph during the morning hours. The wind speed will gradually decrease becoming less than 15 kmph from the southeast direction in the afternoon. It will decrease becoming less than 12 kmph from the south direction during the evening and night.

20.07.2025: Partly cloudy sky. Very light to light rain. The maximum and minimum temperatures over Delhi are likely to be in the range of 35 to 37°C and 24 to 26°C respectively. The minimum temperature will be below normal up to 1 to 2°C, and the maximum temperature will be near normal. The predominant surface wind will likely be from the southwest direction with a wind speed of less than 10 kmph during the morning hours. The wind speed will gradually increase becoming less than 15 kmph from the northwest direction in the afternoon. It will increase becoming less than 20 kmph from the west direction during the evening and night.

21.07.2025: Partly cloudy sky. Very light to light rain accompanied with thunderstorms/lightning. The maximum and minimum temperatures over Delhi are likely to be in the range of 32 to 34°C and 26 to 28°C respectively. The minimum temperature will be near normal and the maximum temperature will be below normal up to 1 to 2°C. The predominant surface wind will likely be from the southwest direction with a wind speed of less than 20 kmph during the morning hours. The wind speed will gradually decrease becoming less than 15 kmph from the southwest direction in the afternoon. It will decrease becoming less than 10 kmph from the south direction during the evening and night.

Impact expected and Action Suggested due to light rainfall with thunderstorm/lightning:

- Be cautious and take precautionary measures, though there is the likelihood of thunderstorms/lightning.
- Damage to standing crops, Minor to major damage to power and communication lines due to breaking of branches, Partial damage to vulnerable structures due to strong winds, Loose objects may fly.
- People are advised to keep a watch on the weather for worsening conditions and be ready to move to safer places accordingly, stay indoors, close windows & doors and avoid travel if possible, take safe shelters; do not take shelter under trees, do not lie on concrete floors and do not lean against concrete walls, unplug electrical/ electronic appliances, immediately get out of water bodies, keep away from all the objects that conduct electricity.

Impact & Action Suggested

- ✓ **Extremely heavy rainfall (≥ 21 cm)** very likely at isolated places over Rajasthan, West Madhya Pradesh, Coastal Karnataka on 18th; Uttarakhand on 20th & 21st and Kerala during 18th-20th July.
- ✓ **very heavy rainfall** over Rajasthan on 19th; Uttarakhand during 20th-22nd; West Uttar Pradesh on 18th & 21st; Himachal Pradesh during 21st-23rd July Kerala & Mahe, Coastal and South Interior Karnataka during 18th-24th; Tamil Nadu during 18th-22nd July; Coastal Andhra Pradesh on 18th & 19th; East Madhya Pradesh on 18th; Sub-Himalayan West Bengal & Sikkim on 19th & 20th; Odisha on 24th; Konkan & Goa on 20th, 21st, 24th and Ghat areas of Madhya Maharashtra on 18th, 23rd & 24th July.

Impact Expected

- Localized Flooding of roads, water logging in low lying areas and closure of underpasses mainly in urban areas of **(Rajasthan and West Madhya Pradesh)** the above region.
- Occasional reduction in visibility due to heavy rainfall.
- Disruption of traffic in major cities due to water logging in roads leading to increased travel time.
- Minor damage to kutch roads.
- Possibilities of damage to vulnerable structure.
- Localized Landslides/Mudslides/landslips/mudslips/landsinks/mudsinks.
- Damage to horticulture and standing crops in some areas due to inundation.
- It may lead to riverine flooding in some river catchments (for riverine flooding please visit Web page of CWC)

Action Suggested

- Check for traffic congestion on your route before leaving for your destination.
- Follow any traffic advisories that are issued in this regard.
- Avoid going to areas that face the water logging problems often.
- Avoid staying in vulnerable structure.

Agromet advisories for likely impact of Heavy / Heavy to Very Heavy Rainfall

- In **Madhya Pradesh**, ensure proper drainage from standing crops. Postpone transplanting of rice and mango and sowing of pearl millet, soybean and vegetables in **Gird Zone**. Postpone transplanting of rice and sowing of maize and vegetables in **Kymore Plateau & Satpura Hills Zone**. Postpone sowing of soybean and sorghum in **Malwa Plateau Zone** and vegetables and horticultural crops in **Bundelkhand Zone**.
- In **Rajasthan**, postpone sowing of maize, soybean, green gram, black gram and groundnut and ensure drainage in standing crops in **Sub Humid Southern Plain and Aravali Hill Zone**. Postpone sowing of soybean, black gram, green gram, sesame and maize and provide adequate drainage in standing crops in **Southeastern Humid Plain Zone**. Make provision to drain out excess water from fields of pearl millet, sesame, black gram and vegetables in **Flood Prone Eastern Plain Zone** and pearl millet and groundnut fields in **Semi Arid Eastern Plain Zone**.
- In **South Uttar Pradesh**, drain out excess water from standing crops. Avoid transplanting of rice and sowing of green gram, black gram, groundnut and sesame in **Bundelkhand Zone**; transplanting of paddy and sowing of maize, pigeon pea, millet, black gram, green gram, groundnut and vegetables in **Vindhyan Zone**; and sowing of maize, sorghum, pigeon pea, green gram, black gram and vegetables in **Eastern Plain Zone** till soils moisture reaches at optimum level.
- In **Uttarakhand**, ensure proper drainage facilities in soybean, maize, barnyard millet, finger millet, pigeon pea, kidney beans, vegetables and orchards. Harvest matured vegetables and fruits and store in safe place.
- In **Chhattisgarh**, make arrangements for drainage of excess water from fields of rice, maize, pigeon pea, minor millets and vegetables. Provide mechanical support to tall/weak crops with stakes or bamboo to prevent lodging or breakage.
- In **Bihar**, do not allow rain water to stagnate in fields of maize, ragi, kodo, Sava, and vegetables in **North East Alluvial Zone** and ensure proper drainage in maize and vegetable crops in low-lying areas of **South Bihar Alluvial Zone**.
- In **Coastal Karnataka**, drain out excess water from rice nurseries, transplanted rice fields and plantations of arecanut and coconut in **Coastal Zone** and from rice nurseries and fields of maize, cotton and ginger and plantations of arecanut in **Hill Zone**. In **South Interior Karnataka**, make necessary arrangements to drain out excess water from fields of paddy, maize, black gram, green gram, field bean, cowpea, sugarcane, vegetables, ginger and plantations of coffee, pepper, cardamom, arecanut and banana in **Southern Dry Zone** and rice nurseries, fields of paddy, finger millet, maize and plantations of arecanut and black pepper in **Southern Transition Zone**.
- In **Kerala**, ensure proper drainage facilities in rice nurseries, transplanted rice fields, coconut and banana plantations to prevent water logging. Undertake propping in banana to protect the plants from heavy rains.
- In **Tamil Nadu**, ensure proper drainage facilities in rice nurseries, cotton, sugarcane, groundnut and transplanted rice fields, coconut and banana plantations to prevent water logging. Provide staking or support to tender plants of cotton, young plants of sugarcane and fruit-bearing plants of banana to avoid lodging.
- In **Andhra Pradesh**, drain out excess water from sugarcane, already sown fields of direct seeded rice, rice nurseries, sesame, banana & vegetables in **North Coastal Zone**.

- In **Konkan**, make arrangement to drain out excess water from rice and finger millet nurseries, groundnut, vegetables and orchards. In **ghat areas** of **Madhya Maharashtra** drain out excess water from rice and finger millet nurseries.

Livestock / Fishery

- Keep the animals inside the shed during heavy rainfall and provide them balanced feed.
- Store feed and fodder in a safe place to prevent spoilage.
- Construct an outlet with proper netting around the ponds to drain out excess water, thereby preventing fish from escaping in case of overflow.

Agromet advisories for likely impact of Thunderstorm / Gusty Winds / Squally Winds

(Based on the IBF and advisories issued by different AMFUs)

- Provide mechanical support to horticultural crops and staking or support to vegetables and young fruit plants / fruit-bearing plants to avoid lodging due to strong winds.

Flash flood guidance:

24 hours Outlook for the Flash Flood Risk (FFR) till 1130 IST of 19-07-2025 :

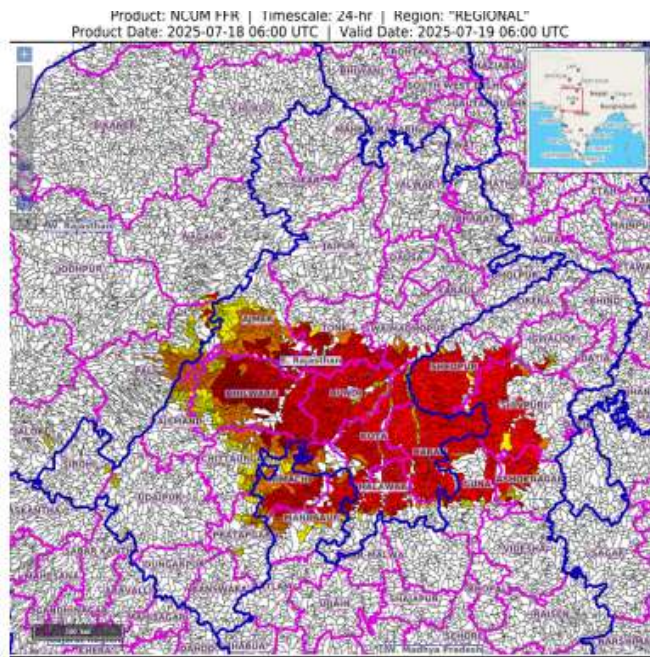
Moderate flash flood risk likely over few watersheds & neighbourhoods of following Met Sub-divisions during next 24 hours.

East Rajasthan - Ajmer, Baran, Bundi, Bhilwara, Chittaurgarh, Jhalawar, Tonk, Swaimadhopur, Rajsamnd and Kota districts.

West Rajasthan – Pali and Nagaur districts

West Madhya Pradesh - Ashoknagar, Guna, Gwalior, Sheopur, Shivpuri, Neemach, Mandsaur districts.

Surface runoff/ Inundation may occur at some fully saturated soils & low-lying areas over Area of Concern (AoC) as shown in map due to expected rainfall occurrence in next 24 hours.



24 hours Outlook for the Flash Flood Risk (FFR) till 1130 IST of 19-07-2025:

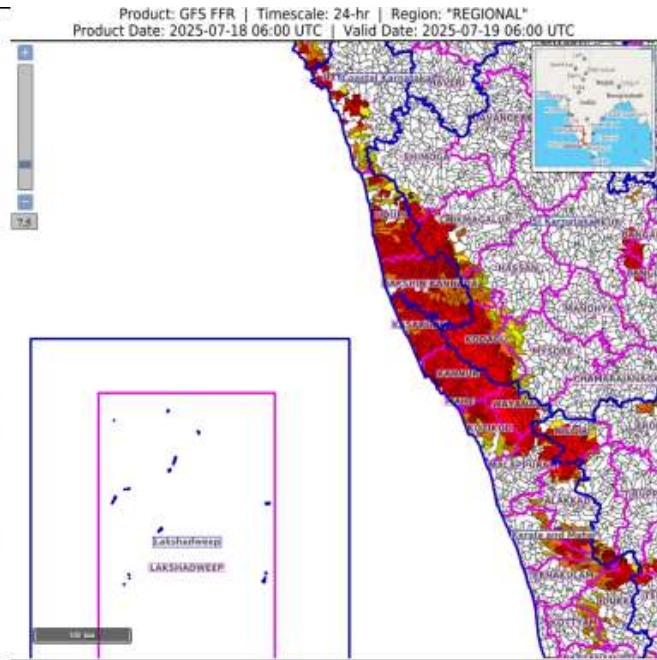
Moderate flash flood risk likely over few watersheds & neighbourhoods of following Met Sub-divisions during next 24 hours.

Coastal Karnataka – Uttar Kannada, Dakshin Kannada and Udupi districts.
Kerala & Mahe - Ernakulam, Idukki, Kannur, Kottayam, Kasargod, Kozikod, Mahe, Malappuram, Palakkad, Pattanamittia, Trishur and Wayanad districts.

Adjoining South Interior Karnataka - Chamarajanagar, Chikmagalur, Shimoga and Kodagu districts.

Adjoining Tamil Nadu - Puducherry & Karaikal - Coimbatore, Dindigul, Nilgiri, Tiruppur and Teni districts.

Surface runoff/ Inundation may occur at some fully saturated soils & low-lying areas over Area of Concern (AoC) as shown in map due to expected rainfall occurrence in next 24 hours.

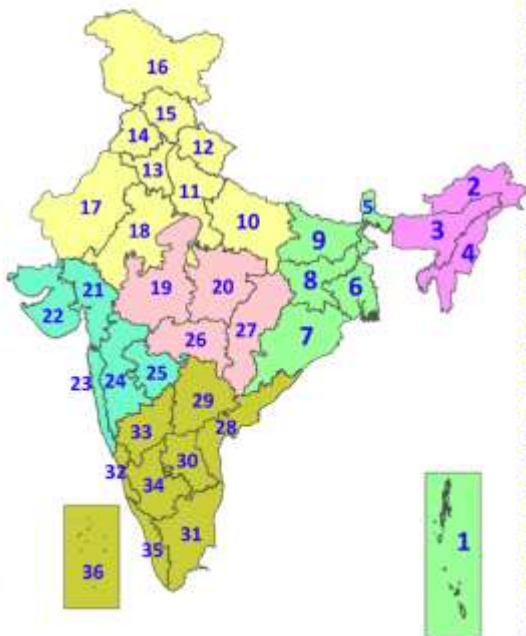


Legends & abbreviations:

- ❖ **Heavy Rain:**64.5-115.5mm; **Very Heavy Rain:**115.6-204.4mm; **Extremely Heavy Rain:** >204.4mm.
- ❖ **Obsy:** Observatory; Automatic Weather Station; **ARG:** Automatic Rain Gauge; **dist:** District; **NH:** National Highway; **KVK:** Krishi Vigyan Kendra; **DVC:** Damodar Valley Corporation; **PTO:** Part Time Office, **Aero:** Aerodrome, **IAF:** Indian Air Force.
- ❖ **Region wise classification of meteorological Sub-Divisions:**
 - **Northwest India:** Western Himalayan Region (Jammu-Kashmir-Ladakh-Gilgit-Baltistan-Muzaffarabad, Himachal Pradesh and Uttarakhand); Punjab, Haryana-Chandigarh-Delhi; West Uttar Pradesh, East Uttar Pradesh, West Rajasthan and East Rajasthan.
 - **Central India:** West Madhya Pradesh, East Madhya Pradesh, Vidarbha and Chhattisgarh.
 - **East India:** Bihar, Jharkhand, Sub-Himalayan West Bengal & Sikkim; Gangetic West Bengal, Odisha and Andaman & Nicobar Islands.
 - **Northeast India:** Arunachal Pradesh, Assam & Meghalaya and Nagaland, Manipur, Mizoram & Tripura.
 - **West India:** Gujarat Region, Saurashtra & Kutch, Konkan & Goa, Madhya Maharashtra and Marathawada.
 - **South India:** Coastal Andhra Pradesh & Yanam, Telangana, Rayalaseema, Coastal Karnataka, North Interior Karnataka, South Interior Karnataka, Kerala & Mahe, Tamil Nadu, Puducherry & Karaikal and Lakshadweep.

LEGENDS

1. अंडमान और निकोबार द्वीपसमूह
2. अरुणाचल प्रदेश
3. असम और मेघालय
4. नागालैंड, मणिपुर, मिजोरम और त्रिपुरा
5. उप-हिमालयी पश्चिम बंगाल और सिक्किम
6. गंगीय पश्चिम बंगाल
7. ओडिशा
8. झारखंड
9. बिहार
10. पूर्वी उत्तर प्रदेश
11. पश्चिम उत्तर प्रदेश
12. उत्तराखंड
13. हरियाणा, चंडीगढ़ और दिल्ली
14. पंजाब
15. हिमाचल प्रदेश
16. जम्मू और कश्मीर और लद्दाख
17. पश्चिम राजस्थान
18. पूर्वी राजस्थान
19. पश्चिम मध्य प्रदेश
20. पूर्वी मध्य प्रदेश
21. गुजरात
22. सौराष्ट्र
23. कोंकण और गोवा
24. मध्य महाराष्ट्र
25. मराठवाड़ा
26. विदर्भ
27. छत्तीसगढ़
28. तटीय आंध्र प्रदेश और यनम
29. तेलंगाना
30. रायलसीमा
31. तमिलनाडु, पुडुचेरी और कराईकल
32. तटीय कर्नाटक
33. आंतरिक उत्तरी कर्नाटक
34. आंतरिक दक्षिणी कर्नाटक
35. केरल और माहे
36. लक्षद्वीप



1. Andaman & Nicobar Islands
2. Arunachal Pradesh
3. Assam & Meghalaya
4. Nagaland, Manipur, Mizoram & Tripura
5. Sub-Himalayan West Bengal & Sikkim
6. Gangetic West Bengal
7. Odisha
8. Jharkhand
9. Bihar
10. East Uttar Pradesh
11. West Uttar Pradesh
12. Uttarakhand
13. Haryana, Chandigarh & Delhi
14. Punjab
15. Himachal Pradesh
16. Jammu & Kashmir and Ladakh
17. West Rajasthan
18. East Rajasthan
19. West Madhya Pradesh
20. East Madhya Pradesh
21. Gujarat
22. Saurashtra
23. Konkan & Goa
24. Madhya Maharashtra
25. Marathwada
26. Vidarbha
27. Chhattisgarh
28. Coastal Andhra Pradesh & Yanam
29. Telangana
30. Rayalaseema
31. Tamilnadu, Puducherry & Karaikal
32. Coastal Karnataka
33. North Interior Karnataka
34. South Interior Karnataka
35. Kerala & Mahe
36. Lakshadweep

SPATIAL DISTRIBUTION (% of Stations reporting)

% Stations	Category	% Stations	Category
76-100	Widespread (WS/Most Places)	26-50	Scattered (SCT/A Few Places)
51-75	Fairly Widespread (FWS/Many Places)	1-25	Isolated (ISOL)



Heavy Rain

Very Heavy Rain

Extremely Heavy Rain

Thunder & Lightning

Hailstorm

Dust Raising Winds

Heavy Snow

Dust Storm

Heat Wave

Warm Night

Hot Day

Hot & Humid

Strong Surface Winds

Cold Wave

Cold Day

Ground Frost

COLOUR CODED WARNING

No Warning (No Action)

Watch (Be Aware)

Alert (Be Prepared To Take Action)

Warning (Take Action)

Probabilistic Forecast

Terms	Probability of Occurrence (%)
Unlikely	< 25
Likely	25 - 50
Very Likely	50 - 75
Most Likely	> 75

* Red colour warning does not mean "Red Alert", Red colour warning means "Take Action".

Forecast and Warning for any day is valid from 0830 hours IST of day till 0830 hours IST of next day.

For more details, kindly visit <https://mausam.imd.gov.in> or contact: 011-2434-4599

(Service to the Nation since 1875)

DEFINITION/CRITERIA

Rain/ Snow *

Heavy: 64.5 to 115.5 mm/cm *
Very Heavy: 115.6 to 204.4 mm/cm *
Extremely Heavy: > 204.4 mm/cm *

Heat Wave

When maximum temperature of a station reaches $\geq 40^{\circ}\text{C}$ for plains and $\geq 30^{\circ}\text{C}$ for hilly regions
(a) Based on Departure from normal

Heat Wave: Maximum Temperature Departure from normal 4.5°C to 6.4°C .

Severe Heat Wave: Maximum Temperature Departure from normal $\geq 6.5^{\circ}\text{C}$

(b). Based on Actual maximum temperature

Heat Wave: When actual maximum temperature $\geq 45^{\circ}\text{C}$.

Severe Heat Wave: When actual maximum temperature $\geq 47^{\circ}\text{C}$.

(c). Criteria for heat wave for coastal stations

When maximum temperature departure is $> 4.5^{\circ}\text{C}$ from normal. Heat Wave may be described provided maximum temperature $\geq 37^{\circ}\text{C}$.

Warm Night

When maximum temperature remains 40°C

Warm Night: When minimum temperature departure 4.5°C to 6.4°C .

Severe Warm Night: When minimum temperature departure $> 6.4^{\circ}\text{C}$.

Cold Wave

When minimum temperature of a station $\leq 10^{\circ}\text{C}$ for plains and $\leq 0^{\circ}\text{C}$ for hilly regions.

(a). Based on departure

Cold Wave: Minimum Temperature Departure from normal -4.5°C to -6.4°C .

Severe Cold Wave: Minimum Temperature Departure from normal $\leq -6.5^{\circ}\text{C}$

(b) Based on actual Minimum Temperature (for Plains only)

Cold Wave: When Minimum Temperature is $\leq 4.0^{\circ}\text{C}$

Severe Cold Wave: When Minimum Temperature is $\leq 2.0^{\circ}\text{C}$

(c) For Coastal Stations

When Minimum Temperature departure is $\leq -4.5^{\circ}\text{C}$ & actual Minimum Temperature is $\leq 15^{\circ}\text{C}$

Cold Day

When minimum temperature of a station $\leq 10^{\circ}\text{C}$ for plains and $\leq 0^{\circ}\text{C}$ for hilly regions

Based on departure

Cold Day: Maximum Temperature Departure from normal -4.5°C to -6.4°C .

Severe Cold Day: Maximum Temperature Departure from normal $\leq -6.5^{\circ}\text{C}$

Fog

Phenomenon of small droplets suspended in air and the horizontal visibility $< 1\text{km}$

Moderate Fog: When the visibility between 500-200 metres

Dense Fog: when the visibility between 50- 200 metres

Very Dense Fog: when the visibility < 50 metres

Thunderstorm

Sudden electrical discharges manifested by a flash of light (Lightning) and a sharp rumbling sound (thunder)

Dust/Sand Storm

An ensemble of particles of dust or sand energetically lifted to great heights by a strong and turbulent wind.

Frost

Ice deposits on ground

Air temperature $\leq 4^{\circ}\text{C}$ (over Plains)

Squall

A strong wind that rises suddenly, lasts for atleast 1 minute.

Moderate: Wind speed 52-61 kmph

Severe: Wind speed 62-67 kmph

Very Severe: Wind speed > 67 kmph

Sea State

Effect of various waves in the sea over specific area

Rough to very rough: Wind speed 41-62 kmph (22-33 knots) & Wave height 2.5-6 metre

High to very high: Wind speed 63-117 kmph (34-63 knots) & Wave height 6-14 metre

Phenomenal: Wind speed > 117 kmph (> 63 knots) & Wave height > 14 metre

Cyclone

Cyclonic Storm: Wind speed 62-87 kmph (34-47 knots)

Severe Cyclonic Storm: Wind speed 88-117 kmph (48-63 knots)

Very Severe Cyclonic Storm: Wind speed 118-165 kmph (64 - 89 knots)

Extremely Severe Cyclonic Storm: Wind speed 166-220 kmph (90 -119 knots)

Super Cyclone Storm: Wind speed > 220 kmph (> 119 knots)

* Red colour warning does not mean "Red Alert", Red colour warning means "Take Action".

Forecast and Warning for any day is valid from 0830 hours IST of day till 0830 hours IST of next day.

For more details, kindly visit <https://mausam.imd.gov.in> or contact: 011-2434-4599

(Service to the Nation since 1875)

Hot and Humid: When maximum temperatures remain 3°C above normal along with the above normal relative humidity.